




EDDYFI ECTANE[®] FIRMWARE UPDATE

HOW TO UPDATE INSTRUMENT FIRMWARE WHEN CHANGING SOFTWARE
VERSION

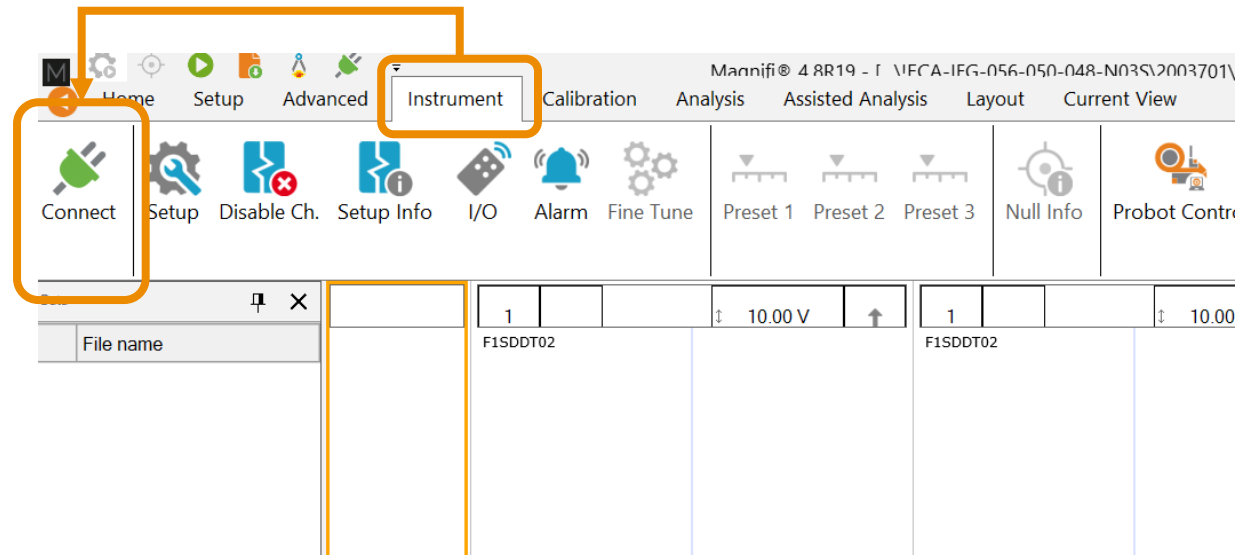
Ectane Firmware

UPDATE PROCEDURE

When updating your Magnifi[®] software version, you might need to update your firmware settings on your Ectane as well. To proceed with this update, follow the next steps:

- In Magnifi 3.X:
 - Access the Instrument connection window by clicking on  or by clicking on the *Operation* menu, then on *Connect to instrument*




- In Magnifi 4.X:
 - From the *frontstage*, select the *Instrument* ribbon, then click on *Connect*

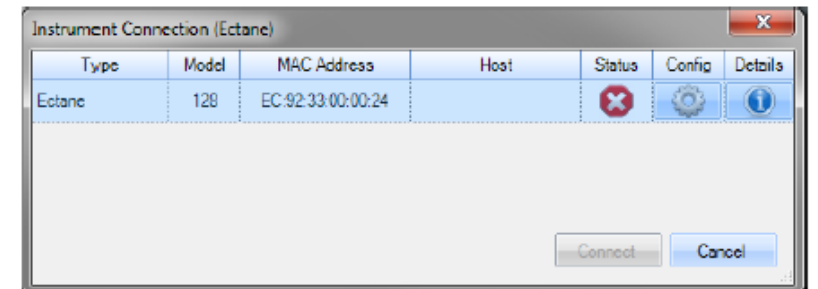
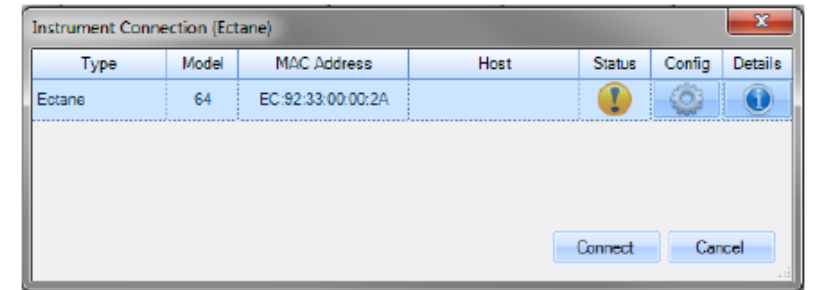
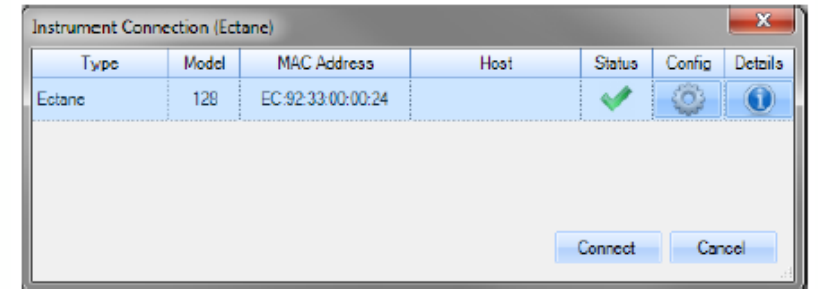


Ectane Firmware

UPDATE PROCEDURE

In the *Instrument Connection* window, the Ectane can have 3 different statuses:

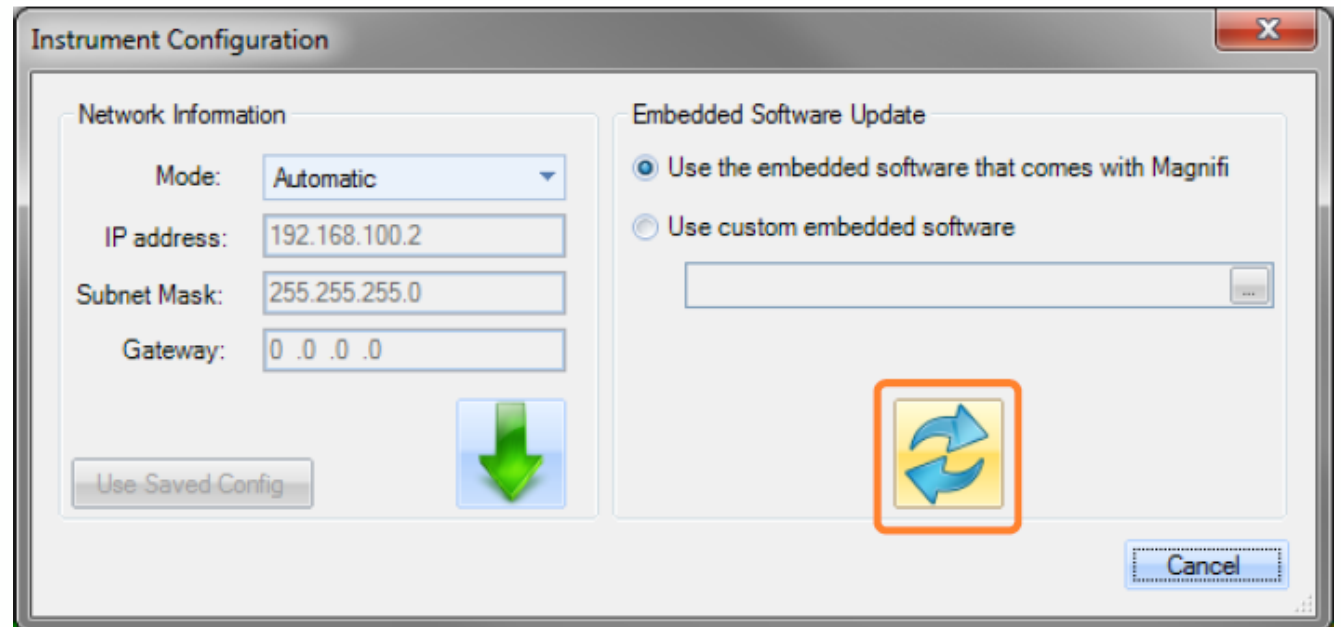
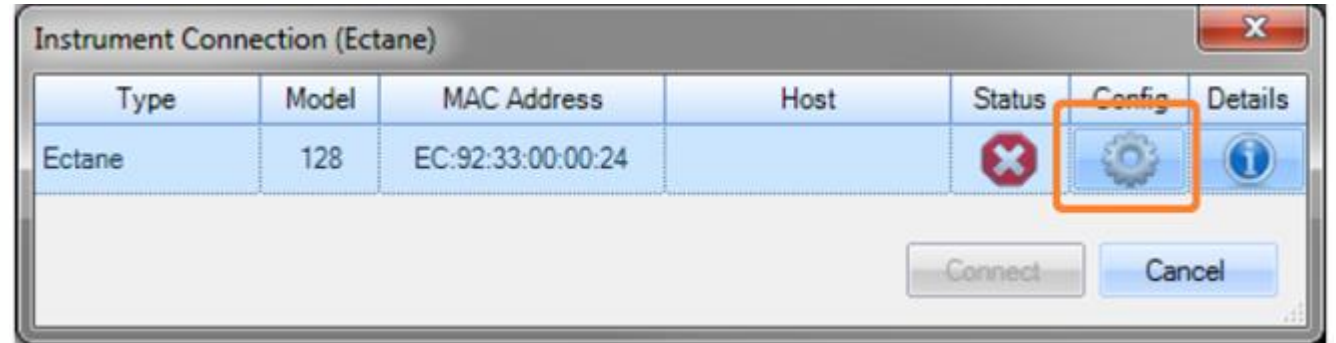
- Up to date with Magnifi version 
 - No action needed
- Different but compatible 
 - Ectane has a firmware version different than the one included in the software version used, but both are compatible
 - Update or no action
- Not compatible 
 - Ectane has a firmware version that is not compatible with the one included in the software version used
 - Need to update firmware



Ectane Firmware


UPDATE PROCEDURE

- When an update is needed, click on the *Config* button of the *Instrument connection* window
- In the *Instrument Configuration* window, click on the *update icon*



Ectane Firmware

UPDATE PROCEDURE

- Wait until the update is complete. Do not turn the unit off while waiting.
 - This action may take a few minutes to complete.
 - During the process, the unit will restart automatically.
- Once the process is complete, go back to the *Instrument Connection* window. The Ectane should now show a green checkmark 
- Select the instrument, then click *Connect* to establish a connection

